



SHINHWA MEDICAL INC.

Non-Surgical Decompression & Correction Device

SpineMT^{K-1}

Spinal Decompression & Mobilization
A Global Standard for Spinal Therapy

*Short Treatment!
High Success Rate!
Customized!*



■■■■ <http://www.spinemt.co.kr> / www.shinhwamedical.co.kr ■■■■
■■■■ E-mail : info@shinhwamedical.co.kr / joanna@shinhwamedical.co.kr / 8614493 @daum.net ■■■■

Now! 3-Dimensional Decompression

SpineMT^{K-1}

- SpineMT^{K-1} is customized and multiple-functional equipment designed according
- to the site, type and level of the herniated discs.

Features of Spine MT^{K-1}

(Cervical & Lumbar)

Mobilization

Spinal muscles
Facet joint
Sacroiliac joint

Unilateral Correction

Herniated disc site
(lateral, medial)

Decompression & Correction

Logarithmic system
Feedback
Herniated disc type
(nuclear, annular, combined)

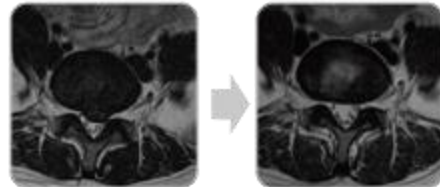
Customized 3- Dimensional Treatment

Target angle + Rotation -Stretch/
Unilateral correction + Decompression

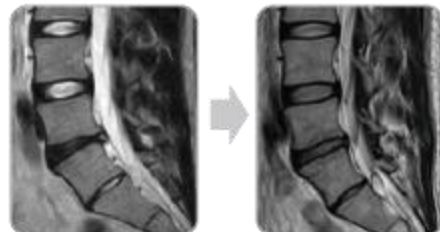
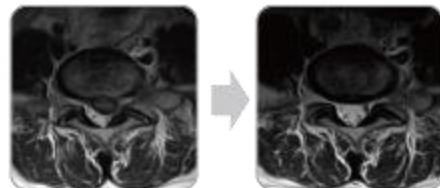
Gravity Traction

0-25°

Case Study of Disc Regeneration



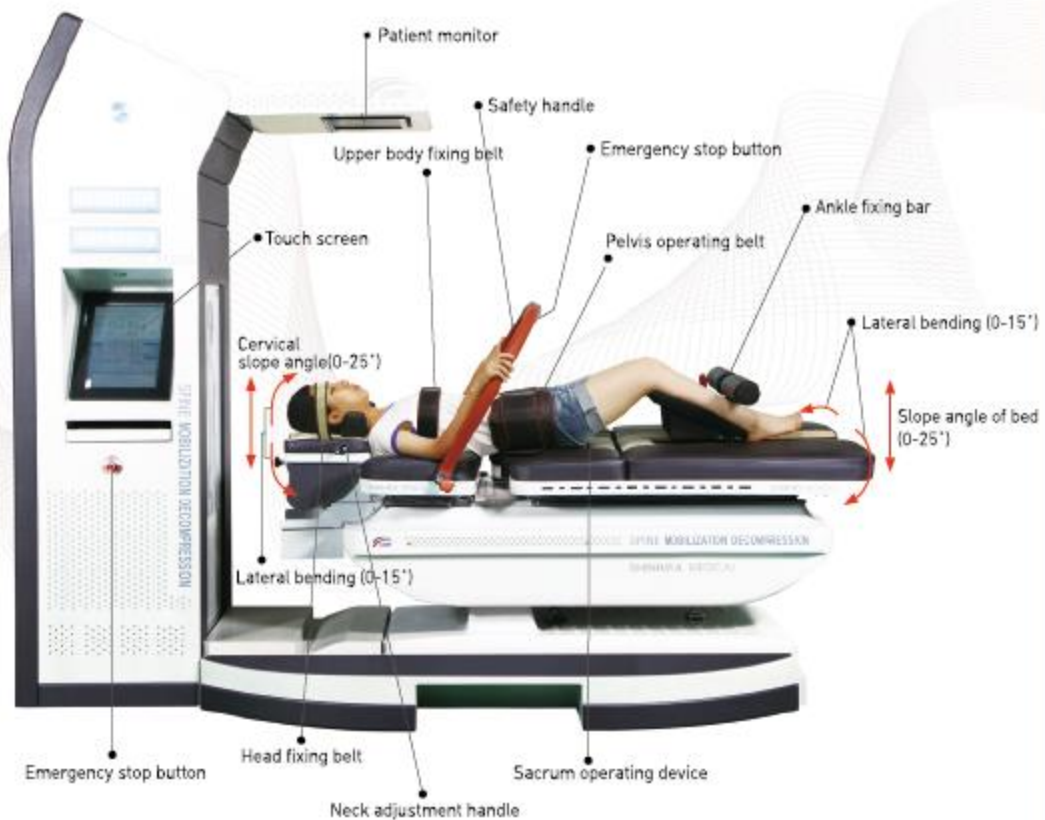
- Reduced disc herniation after treatment
- Resolution of nerve compression after treatment



- Improvement of disc degeneration after treatment
- Reduced disc herniation after treatment
- Increased disc height after treatment

Non-Surgical Decompression & Correction Device

SpineMT^{K-1}



INDICATION

Herniated Nucleus Pulposus(HNP), Degenerative Disc Disease(DDD), Spinal Stenosis, Scoliosis, Facet Syndrome, Myofascial Pain Syndrome, Sciatica, etc

∴ Mobilization Functions of Spine MT K-1 ∴

Step 1 Pelvis / Sacroiliac joint mobilization

The air pump device attached to the pelvic belt presses on the pelvis and relaxes it to increase mobility of the sacroiliac joint and reduce pain.



Step 2 Sacrum mobilization

The upper and lower air pump device, installed at the contact point of the sacrum, mobilizes the sacrum alternately (flexion, extension), increasing mobility of the pelvis.



Step 3 Cervical and lumbar spine mobilization (rotational mobilization of the upper/lower torso)

Rotational movement (0-23°) of the upper/lower torso device relaxes the shortened lumbar muscles and joints.



Step 4 Application of the thoracic spine twist

The upper torso section rotates left and right, up and down to relax the cervical and thoracic muscles and joints.



Step 5 Combined application system (stage 3 + stage 4 + gravitational traction)

This combination of stage 3 and stage 4 functionally relaxes the cervical, thoracic, and lumbar muscles and joints. Additional traction using gravitational pull (0-25°) is applied to treat the deep muscles.



∴ Decompression Mechanism ∴

Cervical

Fixation : bilateral occiput and forehead – 3 point fixation

Head angle control : up and down 0-25°

Cervical lateral angle control : left-15°, right-15°



Cervical Decompression System

Lumbar

Fixation : sacrum and bilateral pelvis – 3 point fixation

Pelvic angle control : up and down 0-25°

Lumbar lateral angle control : left-14°, right-14°



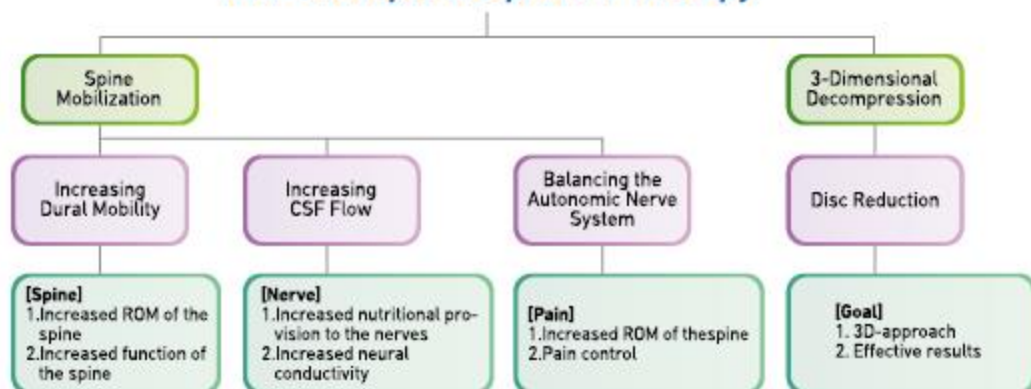
Lumbar Decompression System

Spinal Mobilization & Decompression

SpineMT^K



New Concepts In SpineMT Therapy





ISO13485/2003

CE 0476

*Just relax on **Spine MT** with its stress-free decompression!*

30 minutes' session is like experiencing weightlessness!

SPINE MT^{K-1} E

MODEL NAME: SPINE MT K-1
Size : 1776(L)X693(W)X861(H)
Weight : 150kg
Control box : 600(W)X700(L)X2274(H)
Weight: 80kg
Input Voltage : AC 220V, 60Hz
Consumption Electricity : 400VA



SHINHWA MEDICAL INC.

<http://www.spinemt.co.kr> / www.shinhwamedical.co.kr

Address : #20, Cheongwon-gil, Igwang-myeon, Gijang-gun, Busan 46047 KOREA
Contact : Tel_82-51-724-6655 Fax_82-51-723-6644
E-mail : info@shinhwamedical.co.kr / joanna@shinhwamedical.co.kr / 8614493@daum.net