



TRITON® 6e

Spinal Distraction System



Modern technology and spinal distraction
in service of treating lower back pain

TRITON® 6E

Chattanooga's Next Generation Distraction Table

Throughout history, spinal distraction has been utilized as a treatment option to help relieve peripheral radiation/sciatica and pain associated with various spine injuries and pathologies.

Using more than 40 years of experience in the service of physical therapists, and patients with back pain, Chattanooga introduces its next generation of spinal distraction treatment systems. Consisting of a three-tier portfolio, our latest range of traction tables includes the highly-functional Galaxy TTET300, the mid-range Triton 6M, and the optimum product in the series, the Triton 6E.

Sporting a selection of sophisticated features, the Triton 6E employs modern technology to help put the therapist in total control. Fully electric and highly adjustable, when combined with one of our Triton traction units, this premium table provides the best possible support for practitioners looking to push their traction treatment to the next level.

Key Features

- One of the most advanced electric traction tables, powered by 6 modern actuators, assist in friction-free movement of head, pelvic, chest and leg sections
- Ideally positioned hand remote control allows for easy access around the table
- 6-section treatment table to provide maximum patient comfort in prone and supine positions for manual and traction therapy
- Pelvic tilt section can be adjusted from 0° to 20° to provide flexion of lumbar spine and to help address pelvic asymmetry
- Head piece can be repositioned from -30° to +40° to allow easy access to thoracic and cervical spine
- Atmospheric LED light system in table frame, with cycling or fixed modes
- Tuck-away grab bars for hanging traction without thoracic restraint
- Heated cushions provide greater patient comfort
- Easy to transport and secure once in place
- Complete range of accessories to suit every patient need



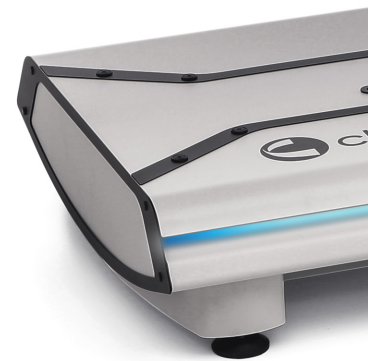
Intuitive remote hand control for all moving parts

Repositional headpiece (-30° to +40°)



Foldaway grab bar

Adjustable arm rests (-30° to +40°)



4 retractable feet/casters



Pelvic tilt section
(0° to 20°)



Table controls regulate
both heating and lighting
functions

Adjustable leg
section
(0° to +45°)

Triton DTS[®]
traction unit
(4798)



Removable
axilla posts
(83215ME)

Pivoting traction mount



Integrated cable and
power cord system

Personal
Authorisation
Safety System
(PASS)

Lighting Options

LED lighting system for personalisation.
Cycle or fixed modes.



Red



Yellow



Green



Blue



Lilac



Purple

Upholstery Color Options



Black/Ecru
(x = 10)



Graphite Grey
(x = 07)



Blue
(x = 02)

TRITON® 6E

Table Ordering Information

Part Number	Product Description
4769E	Triton 6E Traction Table Family:
4769E102	Triton 6E Traction Table in Blue
4769E107	Triton 6E Traction Table in Graphite Grey
4769E110	Triton 6E Traction Table in Black/Ecru

Technical Specifications

Mains power	230 V~ 50/60 HZ, 120 V~ 50/60 HZ	
Current	Max 1A with 230V, Max 2A with 120V	
Dimensions (cm)	Total:	L207 X W70
	Head/ back section:	58
	Middle section:	22
	Leg section:	77
	Lowest position:	48
	Highest position:	95
Heating Temperatures	35 & 38 degrees Celcius	
LED Lighting	7 colours & FADE option	
Dynamic lifting capacity	≤ 200KG	
Maximum workload	≤ 275KG	
Table Weight	Max 198KG	
Electrical Safety Class	Class I, Type B	
Safety test	CE, Class I Rule 12	

Optional Accessories

Triton DTS Traction recommends:	
4798	Triton DTS Traction Unit with EMG module
2825	QuikWrap™ DTS Belting System
7040	Saunders Cervical Traction Device (with clevis)
42901	Knee Bolster Set
9296	Stabilizer Pressure Biofeedback
866300002	Black Naugahyde Wedge

Separate Accessories:	
371108	Black Traction Support Round (x1)
83215ME	Black Axial Post (x2)
32651*	Traction Flexion Stool (*colour variations)