

Warning and Precautions

- The VenaFlow Elite cuffs are designed for single patient use only.
- Risk of explosion if used in the presence of flammable anaesthetics.
- The equipment or system should not be used adjacent to or stacked with other equipment and, if adjacent or stacked use is necessary, the equipment or system should be observed to verify normal operation in the configuration in which it will be used.
- Medical Electrical Equipment needs special precautions regarding EMC. Portable and Mobile RF Communications Equipment can be affected by other Medical Electrical Devices.
- Cuffs used in combination with warming devices may cause skin irritation. Regularly check for patient comfort, compliance and skin irritation.
- Special attention should be given to those patients with neuropathies or tissue viability problems (i.e. diabetes, arterial or venous insufficiencies).
- To prevent extremity compartment syndrome, special attention should be given to patients who are positioned in the supine lithotomy position for extended lengths of time. This includes patients with or without compression cuffs.
- If you experience pain, swelling, sensation changes or any unusual reactions while using this device, consult your medical professional immediately.

Latex Information

All components of the VenaFlow Elite System are latex-free. All VenaFlow Elite cuffs are latex-free and may be placed directly against the skin or over a light compression dressing.

Cleaning Instructions

The tube assembly is reusable. Both the device case and the tube assembly can be cleaned with mild soap solution, antiseptic or disinfectant wipes. Avoid excessive fluids over the top of the system. Do not submerge.

Indications/Contraindications

Intended Use/Indications

The VenaFlow Elite System is intended as a prophylaxis for deep vein thrombosis (DVT). The VenaFlow Elite System is designed to be used only with Aircast VenaFlow Elite Compression Cuffs. Battery operation use only with DJO battery packs.

Contraindications

The VenaFlow Elite System should not be used by persons with known or suspected deep vein thrombosis, severe congestive heart failure, pulmonary edema, thrombophlebitis, severe arteriosclerosis, or active infection. Do not use on extremities which are not sensitive to pain, where cuff will interfere with gangrene, on patients with vein ligation or recent skin grafts, or extreme deformity of the leg. Do not use the VenaFlow Elite System where increased venous or lymphatic return is undesirable.

Warranty

For consigned systems: DJO will repair or replace all or part of the 30B/30BI or 30B-B/30BI-B system for material or workmanship defects for the life of the customer contract.

For purchased systems: DJO will repair or replace all or part of the 30B/30BI or 30B-B/30BI-B system for material or workmanship defects for 3 years from the date of sale.

For disposable cuff purchases: DJO will repair or replace all or part of the cuffs, tube units and battery packs for material or workmanship defects, not including normal depreciation of battery life or charge capacity, for a period of 6 months from the date of sale.

AIRCAST® VenaFlow® Elite



DJO International
7 The Pines Business Park
Broad Street
Guildford
Surrey
GU3 3BH
ENGLAND
Tel: +44 (0) 1483 459 659
Fax: +44 (0) 1483 459 470

For more information on Aircast products go to www.DJOglobal.eu

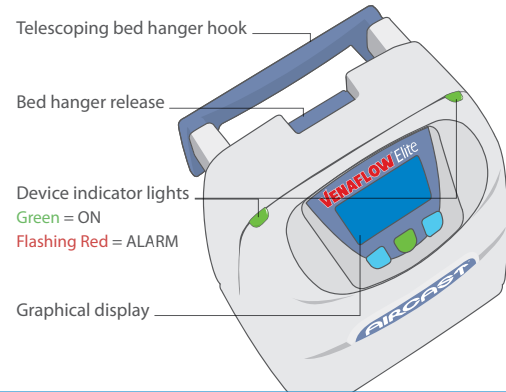
AIRCAST® a DJO brand

© 2010 DJO - 00-0966 - Rev A

User Guide

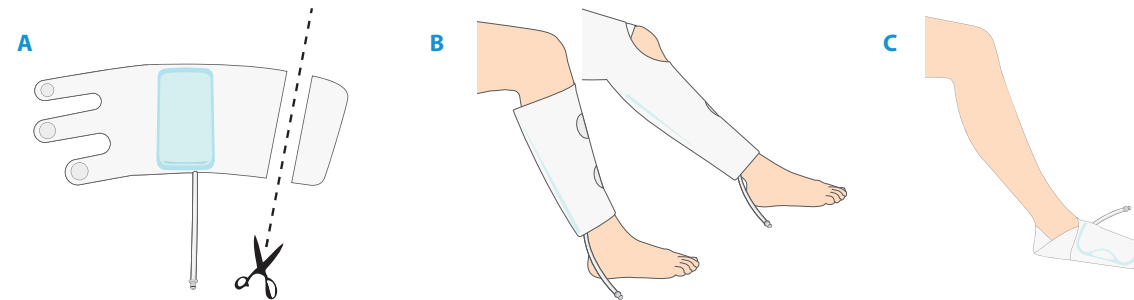
STEP-BY-STEP INSTRUCTIONS FOR OPERATION

1 Set Up Device



- A** Press bed hanger release on the back of the device and gently pull out bed hanger to the desired width.
- B** Connect tubing to the device. Plug device into electrical outlet.

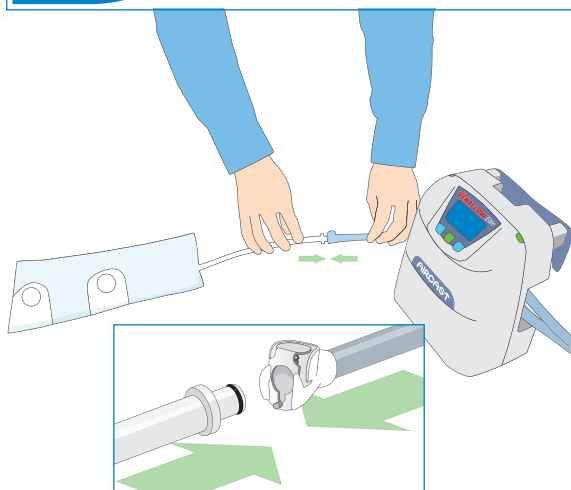
2 Apply Cuff



The VenaFlow Elite System will automatically detect the cuff that is attached to the device and apply appropriate pressures. **Be sure to secure cuff straps for a close but comfortable fit. Do not over tighten. When using the calf cuff and thigh cuff, rotation of the aircell on the leg does not affect performance of the system.**

- A** For varied patient sizes, trim for proper, snug fit.
- B** Apply cuff snugly with the tube pointed toward the foot. Aircell can be orientated to patient and nursing preference (posterior, lateral, anterior or medial).
- C** Apply foot cuff snugly with the aircell centred on bottom of foot and with the tube pointed to the left.

3 Connect System



Connect cuffs to the tubing that is attached to the device.

4 Pressure & Cycles

- Press ON/OFF/RESET button.
- Cuff inflation alternates between the two legs every 30 seconds.
- The distal aircell inflates first and the proximal aircell follows.
- Pressures settle at 45mmHg ± 15% (Foot Cuff peak ~130 mmHg).
- After 6 seconds the cuff deflates.



- Alarm will sound if the system is not functioning properly.

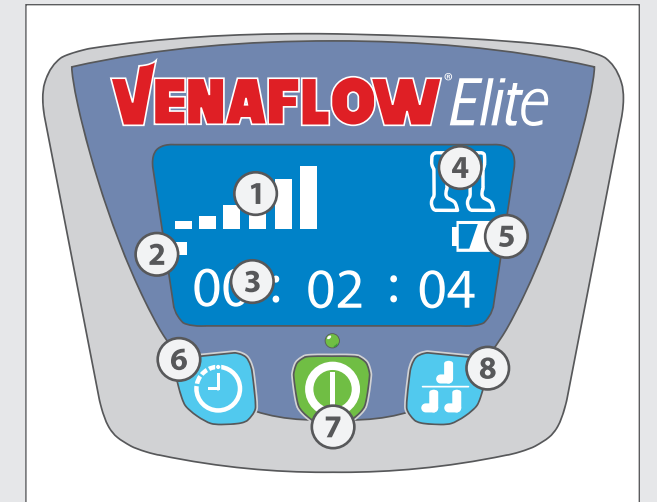
5 Single / Dual Leg



Once powered on, the VenaFlow Elite System will default to dual leg operation mode. If single leg use is desired, push the single leg operation button during first 3 minutes after powering on the device. Device will alarm if single/dual is not properly set.

USER INTERFACE

The VenaFlow Elite's features are easily monitored and adjusted from the user interface control panel.



- 1** Inflation Cycle indicator
- 2** First 3 minutes (ramp up) indicator
- 3** Patient Compliance counter
- 4** Single / Dual Leg operation indicator
- 5** Battery Indicator
* Note: Not all VenaFlow Elite Systems will contain a battery
- 6** Patient Compliance counter reset push button
- 7** ON / OFF / RESET push button
- 8** Single / Dual Leg operation push button
* Set during first 3 minutes

Symbol Definitions

- Power on/off button and alarm reset
- Dual or Single leg operation
- Compliance monitor reset
- Call for service
- See VenaFlow Elite System operator's manual
- Inflation cycle indication (Bars indicate cuffs are inflating)
- Tube alarm