



energy

# THERA MASTER

**The Global Standard in  
Spinal Decompression Therapy**



# THERA MASTER

Unlike Simple Traction..

Allows Seamless Targeting  
of Individual Discs And  
Bypassing Proprioceptor  
Response



## INDICATIONS

- ▶ THNP & Degenerative Disc
- ▶ Anti-colytic Spondylitis
- ▶ Scoliosis & Stenosis
- ▶ Joint Problems
- ▶ Muscle Imbalance for rebuild

## PROVEN RESULTS

- ▶ Reduce pain
- ▶ Increase vertebral flexibility
- ▶ Reduce muscle spasm
- ▶ Relieve nerve compression
- ▶ Resorption of protruding discs

## Decompression Therapy With Rotational Mobilization.

## INFRARED LUMINATION THERAPY

- ▶ Helps relax the tightened muscles during treatment through the top and bottom lamps.
- ▶ Maximizes the performance of the overall treatment process.

(Note: The top infrared unit is optional)



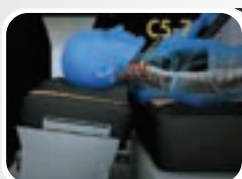
# ADVANCED CONTROL SYSTEM

- Clear and easy-to-use 14.5" touch based control panel.
- Complete control at the tip of your fingers, all from a single control panel.
- Control a variety of parameters targeting cervical, lumbar and the pelvis regions such as:
  - 1 Segment adjustment
  - 5 Rotational mobilization
  - 2 Unilateral approach
  - 6 Age-based preset options
  - 3 Decompression
  - 7 Infrared - Top & Bottom
  - 4 Sacral & Pelvic mobilization



## GO IN-DEPTH

### CERVICAL



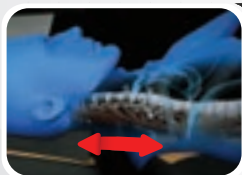
#### Targeted Therapy

- Angle adjustable from 0 ~ +15°
- Allows precise targeting of discs between segments C1:T1



#### Unilateral Application

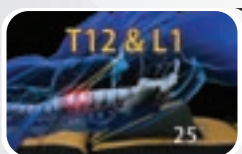
- Up to 80mm adjustable on both right & left sides



#### Cervical Decompression Therapy

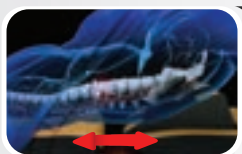
- Application of feedback system
- Level adjustable from 0 ~ +25°
- Application of decompression function

### LUMBAR



#### Targeted Therapy

- Pelvic tilt possible from 0° to 25°
- Allows precise targeting of discs between segments T12:L1



#### Lumbar Decompression Therapy

- Application of feedback system and exercise function
- Application of decompression function
- Functional & effective automatic programs



#### Rotational Application

- Treatment according to the type of escape of the disk
- Adjust the angle of lumbar motion
- Stop position from 0 to 18° for twisted spine & pelvis



#### Unilateral Application

- Up to 90mm adjustable on both right & left sides

## PRODUCT SPECIFICATION

Model Name Thera Master Spine-MT series  
 Certifications CE, KFDA and JFDA



	Model - V1	Model - V2
Weight	120 Kg	140 Kg
Dimensions	(L) 1930 mm (W) 845 mm (H) 1150 mm	(L) 1930 mm (W) 845 mm (H) 1465 mm
Product	Input & Apparent power 220 Vac / 60 Hz, 550 VA Device Heat 25 ~ 40°C Max. Timer 90 min Adjustment of height Head 0 ~ 90 mm, Lower body 0 ~ 470 mm	
Unilateral	Head Max. adjustment range 80 mm Range 0 ~ 15° Lower body Max. adjustment range 60 mm Range 0 ~ 25°	
Pelvis Mobilization	1 Mode	
Sacral Mobilization	2 Mode	
Stoppage on the sides	Upper body 8° and Lower body 18°	
Rotation	Upper body 0 ~ 8° 3 step (High, Medium, Low) Lower body 0 ~ 17° 3 step (High, Medium, Low)	
Decompression for head	90 mm upto 45 sec	
Decompression for lumbar	140 mm upto 65 sec	
Infrared	200 mW/cm <sup>2</sup> 1800 nm Below the waist	200 mW/cm <sup>2</sup> 1800 nm Below the waist (Independent module)



**ONE STOP SHOP**  
FOR ALL YOUR  
PHYSIO AND REHAB  
NEEDS

**energy**

**Physiotherapy Modalities**

**rPMS**

**Spinal Decompression Therapy**  
**Transcranial Magnetic Stimulation**

**Hot & Cold Therapy**

**Exercise Therapy**

**Cryo Chamber**

**Treatment Tables**

**Hydrotherapy Pool**

**Underwater Treadmill**

**Virtual Rehab**

**Balancing Platform**

**GAIT Lab**

**Isokinetic System**

**Neuro Rehabilitation Robot**

**Robotic GAIT Trainer**

**Spine & Whole Body Analysis**

**Energy Incorporation**

5277 | 8<sup>th</sup> Street | Ram Nagar North Extension | Madipakkam | Chennai 600091 | India  
T: +91 44 4006 7974, +91 72000 53696 | [incorporation@cnergy.in](mailto:incorporation@cnergy.in) | [customercare@cnergy.in](mailto:customercare@cnergy.in)  
[www.cnergy.in](http://www.cnergy.in)