

ORTHO REHAB

NEURO REHAB

SPORTS REHAB

URINARY INCONTINENCE

# rPMS

Repetitive Peripheral Magnetic Stimulation



# SALUS TALENT PRO

A Gold Standard in Pain Management & Urinary Incontinence

# THE WORLD'S BEST HIGH-END ELECTROMAGNETIC STIMULATION DEVICE FOR PAIN MANAGEMENT



Repetitive Peripheral Magnetic Stimulation (rPMS), also called deep electromagnetic stimulation is achieved using strong magnetic fields (applying eddy current deep inside) which can pass through clothes, tissues and bones and activating the treatment regions deep inside the body. Salus Talent products generate magnetic field of 2~3 Tesla which is about 400~600 times stronger than the normal bar magnet, making it the most effective treatment option for any type or extent of musculoskeletal disorders and spinal disorders.

Salus Talent Pro is undoubtedly the ultimate pain management equipment due to its 2 transducers – handheld one to treat smaller areas and big pillar transducer for larger areas. The 3 treatment modes add to the versatility of its pain treatments.

Salus Talent A with 1 pillar transducer and button controls, is a very reliable and at the same time powerful enough equipment for individual hospitals as well as full fledged physiotherapy centres. It is sufficient to treat almost all kinds of acute and chronic pain conditions.

- ★ The world's 1<sup>st</sup> 3 Tesla magnetic field-device for deep penetration and highly effective treatment
- ★ Non-invasive and non-contact transducers
- ★ Unique oil circulation system for cooling the transducers makes continuous treatment possible
- ★ Special UI treatment protocols
- ★ Ergonomically designed UI chair to provide patients with toilet position for more effective treatment



-  Fully dressed
-  Less time
-  Non-Invasive

## Effect of the Electromagnetic Stimulation

### Normal Pain Curer



### Electromagnetic Stimulator



Technical Specs	Salus Talent Pro	Salus Talent A
Magnetic Power	3 Tesla ± 20%	
Channels	2	1
Magnetic Frequency	1 - 100 Hz	
Treatment Protocol	User, Manual, and Auto - 20 each	Manual and Auto - 9 each
Treatment Time	1 - 60 minutes	
Interface	8" LCD touch screen, Jog shuttle	4 buttons, 1 jog shuttle
Dimension	45 x 60 x 110 cm	46 x 52.6 x 98 cm
Weight	60 Kg	30 Kg



# SALUS TALENT PRO AS URINARY INCONTINENCE DEVICE

Involuntary, uncontrolled urination or urinary incontinence is observed when sphincters, muscle of the pelvic floor and the bladder muscles do not function correctly, since they are either too weak or overly active. This unpleasant problem affects people of both genders and all ages. Most common causes are aging, vaginal delivery, pelvic floor surgery, radical prostatectomy, chronic prostate inflammation, etc.



Can treat all types of incontinence:

- ★ **Stress Incontinence** - Urine leakage due to reduced function of pelvic floor muscle during coughing, sneezing or other physical activities
- ★ **Urge Incontinence** - Urine leakage after an urgent need to urinate due to over active urinary bladder
- ★ **Mixed Incontinence** - Combination of stress and urge incontinence

### PAIN MANAGEMENT INDICATIONS

Musculoskeletal Disorders | Degenerative Arthritis | Rheumatoid Arthritis | Cervical Pain | Sport Injuries | Frozen Shoulder | Muscle Relaxation | Pain Control After Accident | Spinal Disorders | Acute/Chronic Lumbago | Hip Gout (Sciatica) | Spinal Bifida | Spondylitis | Chronic Back Pain | Spinal Disc Disease | IMS & TPI Treatment

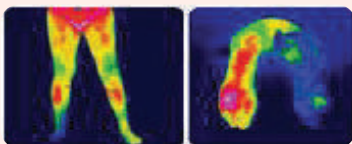
### INCONTINENCE INDICATIONS

Urinary incontinence | Chronic pelvic pain | Postpartum pelvic floor strengthening | Hyperplasia | Prostatitis | Erectile dysfunction | Fecal incontinence | Sexual anesthesia | Benign prostatic

**ONE SESSION OF 30  
MINUTES TREATMENT  
GENERATES ABOUT  
12,000 PELVIC MUSCLE  
CONTRACTIONS  
WHICH MEANS 12,000  
KEGEL EXERCISES**

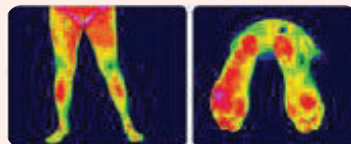
### Clinical Image Comparison of a patient with L4/5 HNP

#### Before Treatment



Right leg & the sole of the right foot show low temperature due to pain and poor blood circulation.

#### After Treatment



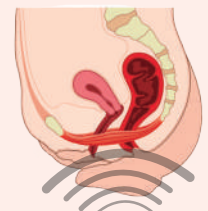
However, after some electromagnetic treatment, the treated areas show normal temperature.

### Pain Management Indications

#### Before



#### After





# ONE STOP SHOP FOR ALL YOUR PHYSIO AND REHAB NEEDS

energy<sup>®</sup>

- Bracing & Supports
- Physiotherapy Modalities
- rPMS
- Spinal Decompression Therapy
- Transcranial Magnetic Stimulation
- Hot & Cold Therapy
- Exercise Therapy
- Treatment Tables
- Hydrotherapy Pool
- Underwater Treadmill
- Virtual Rehab
- Balancing Platform
- GAIT Lab
- Isokinetic System
- NeuroRehabilitation Robot
- Robotic GAIT Trainer
- Spine & Whole Body Analysis

Imported & Marketed by

**Energy Incorporation**

5277, First Floor, 8th Street, Ram Nagar North Extension,  
Madipakkam, Chennai 600 091, India. | Ph: 044 40067974

Customer Care: 7200053696 | E:customercare@energy.in | www.energy.in

Manufactured by

**REMED**

Rehabilitation Medical Company  
South Korea

